

# WOLF V500 ECU



The Wolf V500 ECU offers 5th generation design from over 14 years of research and development, made specifically for serious race and performance applications.

### V500 ECU Highlights:

- Fast to install and easy to tune, many quick setup methods.
- Supports 1,2,3,4,5,6,8,10,12 cylinder applications, 2 & 3 rotaries with mapped split, and more.
- Latest 32 bit 40MHz CPU with Dual Time Co-Processors and dedicated injector drive system.
- Full sequential, 8 injector plus 8 ignition outputs, programmable high current peak&hold injector drivers.
- Incredibly versatile auxiliary control and sensor systems.
- Control up to 27 auxiliary output pins with many 3D, linear, PWM, switched and dedicated functions for any possible requirement: Stepper Motor control, Turbo Boost Control, Idle Speed Control, Wheel Speeds, NOS, VTEC/VVT, Water Spray, Stepper Motor, plus many more inbuilt functions.
- Auxiliary sensor inputs, read, control and log up to 13 extra sensors on top of the many dedicated inputs.
- High resolution 3D maps with quick adjustment modes, on-screen performance trims.
- Latest 3D graphing, live dashboards and Datalogging PC Software.
- Internal MAP Sensor reads up to 30psi boost at no extra cost. (External MAP used if > 30psi)
- Compact and light weight, only 126mm x 104mm x 39mm and 500 grams *more details in boxes to the right...*

### V500 Universal Kit Contains:

- 1 x Wolf V500 ECU
- 1 x Wolf V500 Main Loom (Universal)
- 1 x Wolf V500 Input Trigger Loom
- 1 x PC Software and Help File CD
- 1 x PC Serial Cable
- 1 x Set of ECU Mounting Brackets
- 1 x Warranty Card
- 2 x Wolf Sticker



### New Wolf V500 Plugin Adapter Range

Designed to Plug directly into your Nissan, Toyota, Mazda, Subaru, Holden, Mitsubishi, and more.

The V500 Plugin Adapter is the fastest way to get your car up and tuned on a fully programmable engine management system. All functions that are not used in the normal operation of the vehicle are yours to add extra features and performance to your engine.



Plugin Adapter

For more information visit [www.wolfems.com](http://www.wolfems.com)

### ENGINES

Run engines up to 16 cyl.  
Full Rotary engine support  
Internal MAP sensor to 30psi  
N/A, Turbo, Supercharged  
  
A wide range of direct Plug-In ECU's are available

### FUEL

High Resolution 3D maps  
2048 points, 125rpm steps  
Easy Tuning Modes  
0.0035mS Fine resolution  
  
8 Full Sequential Outputs  
Smart, fault reporting Drivers  
Drive 1-32 Injectors  
  
Many dynamic trims

### IGNITION

High Resolution 3D maps  
2048 points, 125rpm steps  
Easy Tuning Modes  
0.1 degree Fine resolution  
  
8 Full Sequential Outputs  
Smart, fault reporting Drivers  
Drive 1-8 Ignition Coil Packs  
  
Many dynamic trims

### CONTROL

Dual Memory system  
Power/Economy modes  
Wide-Band Air-Fuel-Ratio  
Closed Loop Control  
Idle Speed Control  
Stepper Motor Driver  
Turbo Boost Control  
Turbo Timer support

### AUXILIARY IO

Dedicated Outputs:  
Thermo Fan, Fuel Pump,  
Boost Control, Idle Speed  
  
15+ Auxiliary Inputs/Outputs:  
VTEC/VVT, NOS, Shift Lights,  
Water Spray, Stepper Motor,  
Emission Control,  
Wheel Speed and more.

### DASHBOARD

Separate WOLF DASH V500 available with:  
Backlit Graphics Display  
Dash or window mount  
Live ECU Tuning  
Dashboard Readouts  
Gauge Readouts

### SOFTWARE

Latest 3D graphing  
Graphical Datalogging  
Table Datalogging  
Variable speed Log playback  
On-screen Dashboards  
Easy tuning and setup modes

### SIZE

Very Compact:  
126mm x 104mm x 39mm  
including sealed connector  
  
Light Weight:  
Only 500 grams  
  
Robust anodized case

# WOLF V500 DASH

\*Wolf V400 Dash also available for use with Wolf3D V4 and Wolf V400 engine management systems.



shift light

monitor engine data

ecu trims

backlight

Enjoy your Wolf V500 ECU in race or performance use with this great value dashboard unit.

Complete with wiring, dashboard and window suction cup, the Wolf V500 Dash provides many screens of information, graphical dashboard main screen, analog gauges and detailed status screens.

A built in Shift Light function with audio feedback, and adjustable backlight for night driving. Make live ECU trims and performance changes to your connected V500 ECU.

The Wolf V500 Dash connects straight into your Wolf ECU plus power and ground for instant engine data.

Size: 186mm x 85mm x 31mm  
Screen Size: 96mm x 53mm  
Weight: 470g



Main Screen



Gauges Screen



Bargraph Screen



Detail Screen



Dashboard Setup



ECU Adjustment Trims

To see the Wolf V500 Dash in Action, download the Wolf Dash Video from our website [www.wolfems.com](http://www.wolfems.com)

### EFI and Racing Accessories



Fuel Injectors



Wideband Air Fuel Ratio Meters



Competition Dash Displays

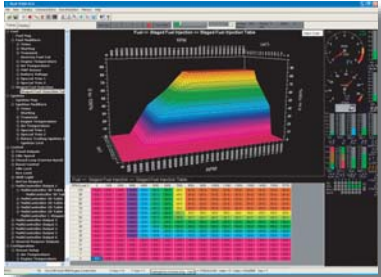


Race Inspired Intake Systems

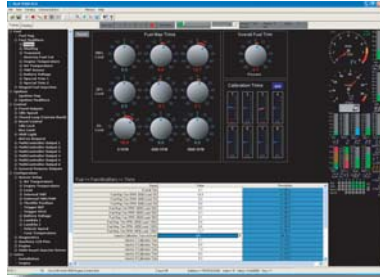
# WOLF

## PC SOFTWARE

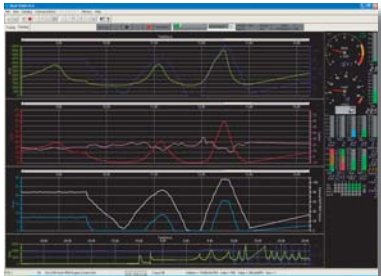
The Wolf PC Software is the latest, full featured PC Software package for Wolf engine management systems, and is supplied with every Wolf V500 ECU at no extra cost.



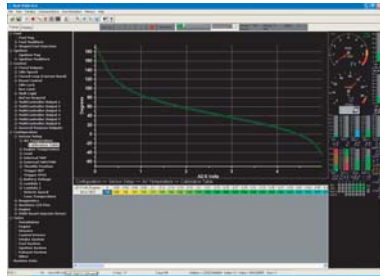
Latest 3D, 2D graphing and ECU tuning procedures



Easy Setup dials and sliders with instant live adjustments to the running ECU. See and feel the changes without any delay.



ECU Datalogging with Variable Speed Playback. Unique Time-Shifting function to constantly save the last 30 seconds of action even before you start recording ensures you never miss the most important events.



2D Chart Wizard allows you to have a calibration or compensation curve entered into the ECU in seconds rather than minutes.

Live, on-screen Help Text for every parameter means never having to find the manual to remind yourself what a particular parameter is used for.

Trace function, shows you exactly where in the Fuel and Ignition Maps you have driven through on a dyno or drag run.

This is not your ordinary ECU software, but the the latest carefully developed, complete package to go with our long-term development of the latest Wolf V500 ECU system.

Order online at:

# www.wolfems.com

or direct from a dealer

Available from:

WOLF ENGINE MANAGEMENT (A.E.M. Pty Ltd) PO Box 594, Bayswater, Victoria, Australia 3153  
 Phone: +61 3 9761 3161 Fax: +61 3 9761 3162 Email: sales@wolfems.com

# WOLF

## V500

www.wolfems.com

### SET YOUR ENGINE FREE!



## The incredible new **Wolf V500**

compact, fast & fully featured

